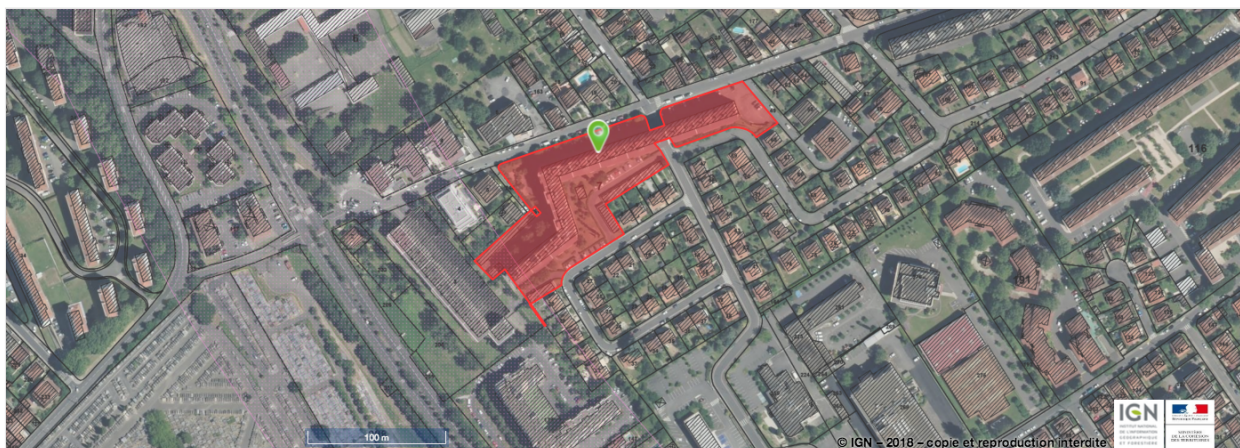


## IMPRESSION DE LA CARTE



## Légende de la Carte






### Légende de la vue d'ensemble



#### COMMUNE (RNU)

 Règlement national d'urbanisme

#### DOCUMENT (PLUi, PLU, POS, CC, PSMV)

-  Plan local d'urbanisme intercommunal
-  Plan local d'urbanisme
-  Plan d'occupation des sols
-  Carte communale
-  Plan de sauvegarde et de mise en valeur

### Légende des Documents d'Urbanisme

