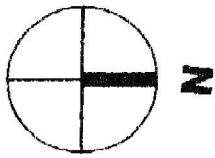
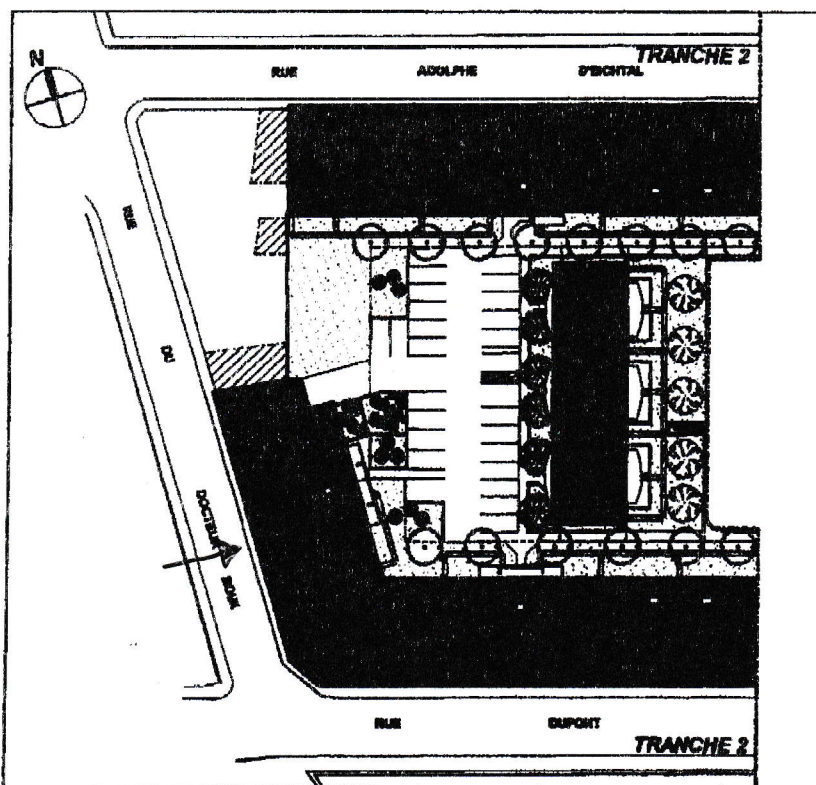
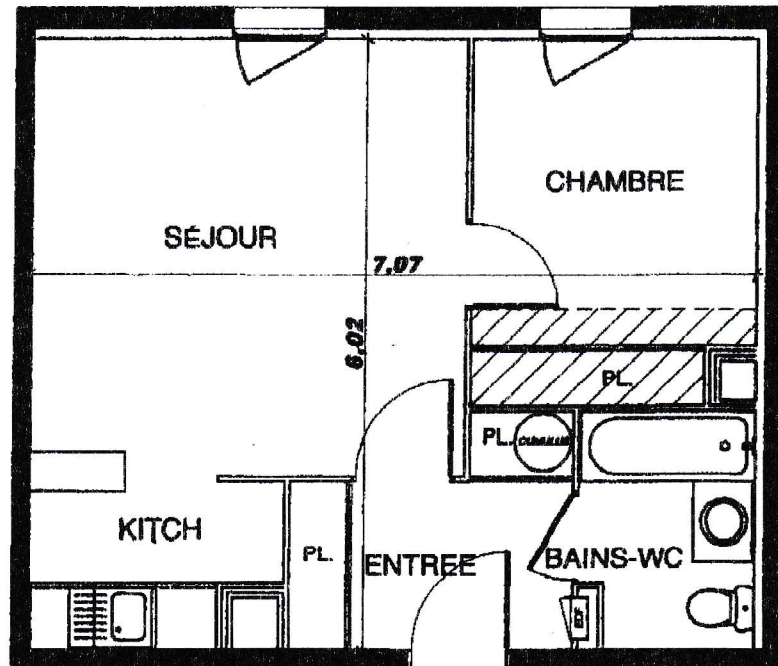


Villa di Cavalieri

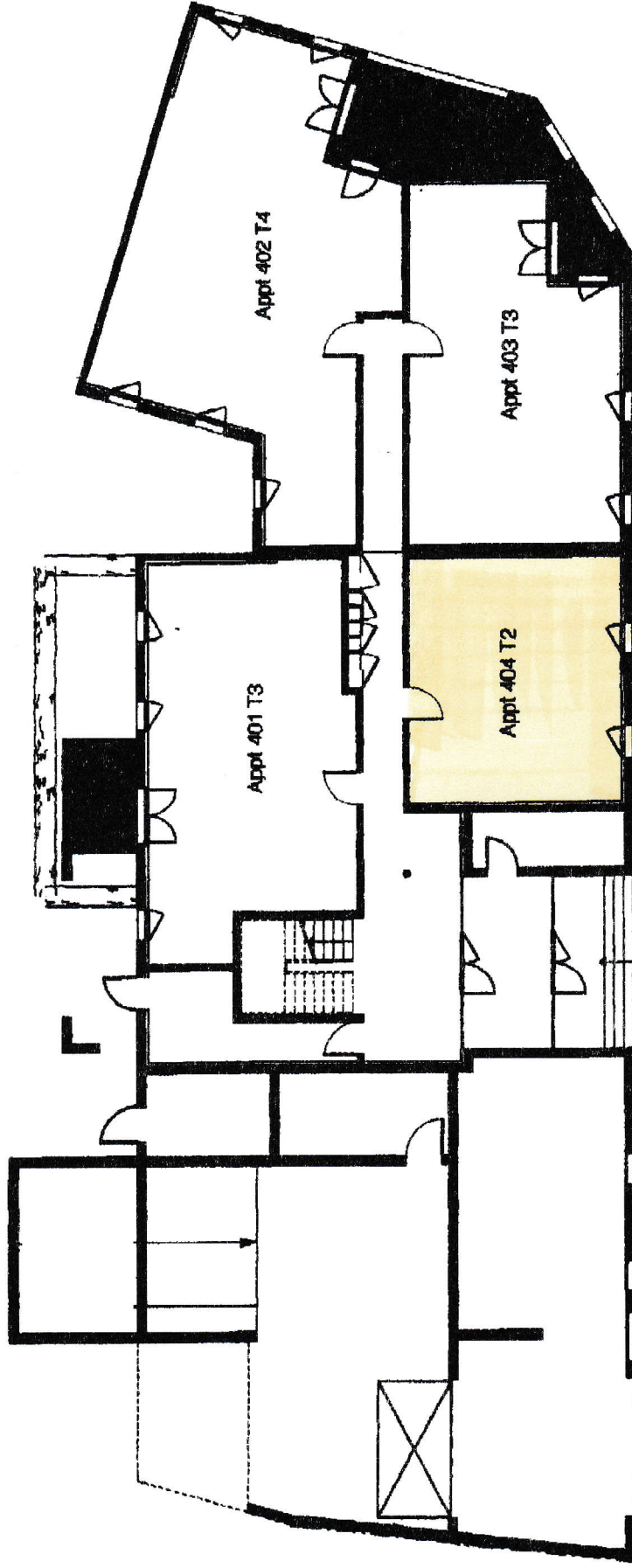
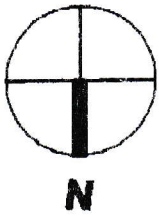


+ 1 place de parking aérien n° 154



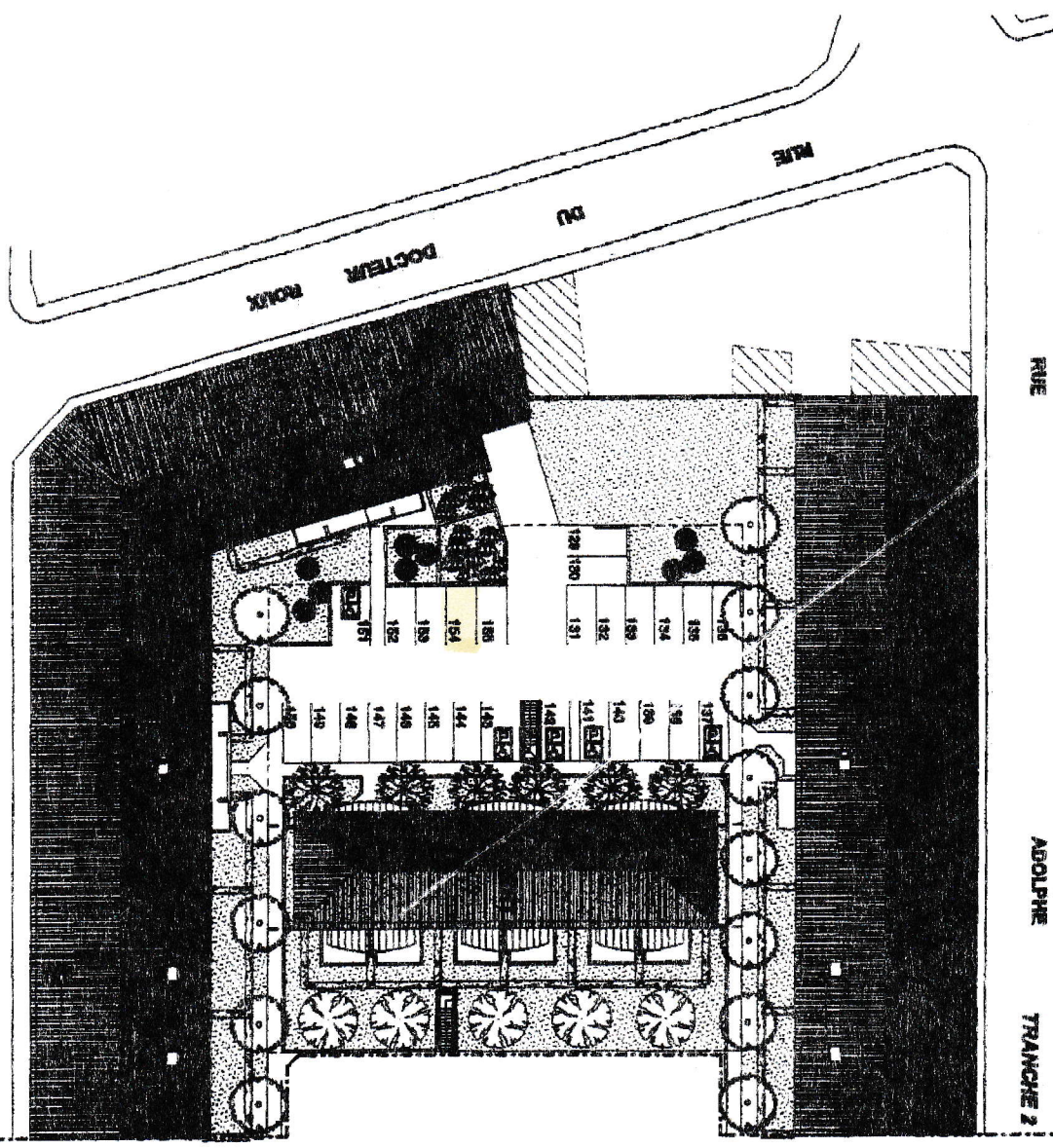
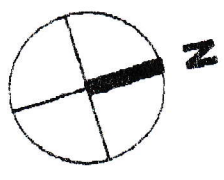
BAT 4 - RDC - T2	n° 404
Entrée + PI	5,18 m ²
Séjour + Kitch	21,97 m ²
Chambre + PI	9,71 m ²
Bains + WC	3,88 m ²
TOTAL HABITABLE	40,74 m²

Villa di Cavaliere



BATIMENT 4 - RDC

Villa di Cavalieri



02/2004 - La société se réserve le droit d'apporter des modifications qui seraient dues à des impératifs d'ordre technique ou administratif -