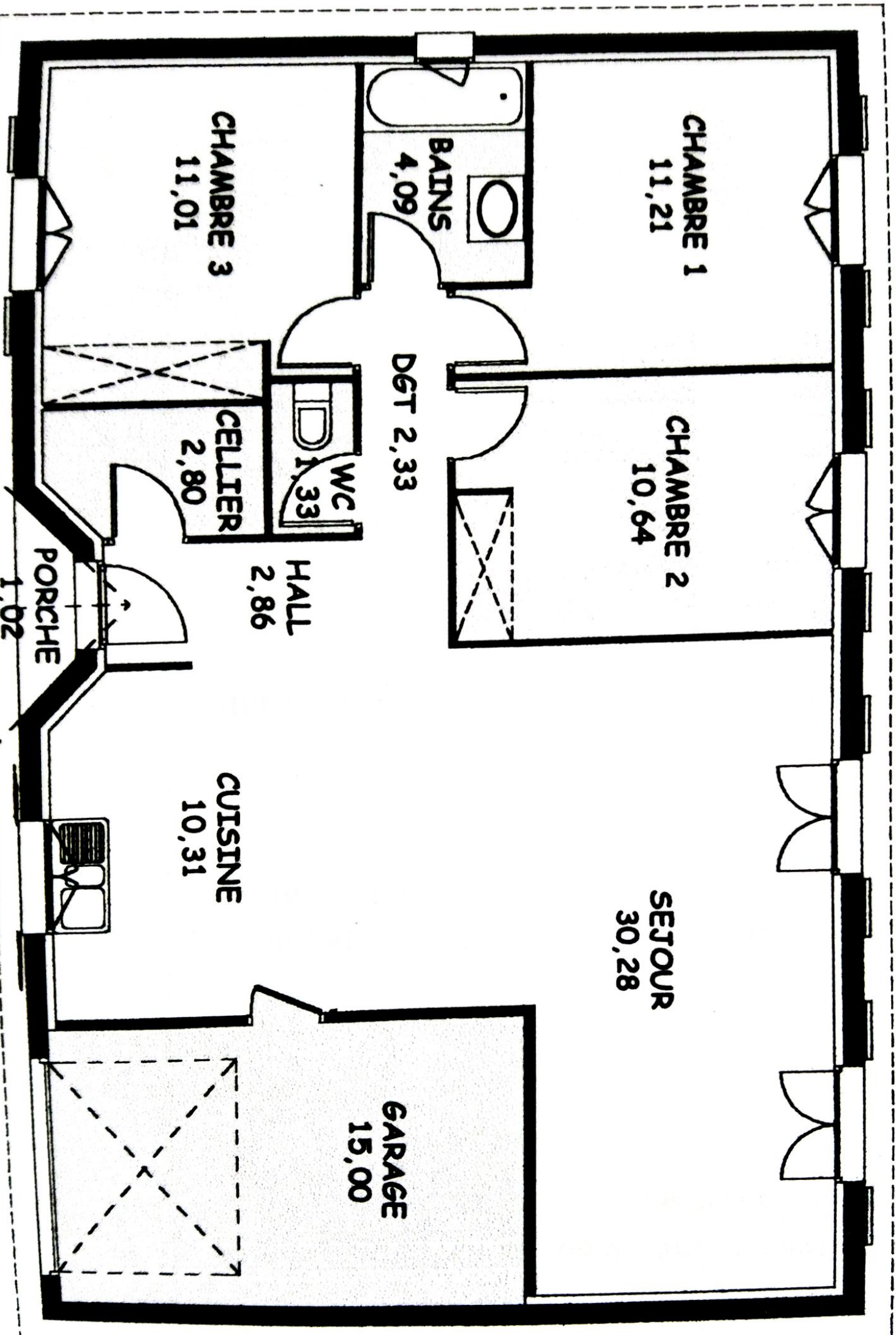


1 536



CHAMBRE 1
11,21

CHAMBRE 2
10,64

CHAMBRE 3
11,01

BAINS
4,09

DGT 2,33

WC
1,33

CELLIER
2,80

HALL
2,86

PORCHE
1,02

CUISINE
10,31

SEJOUR
30,28

GARAGE
15,00