

A large, leafy tree with a thick trunk and dense green foliage dominates the left side of the image. The tree's canopy extends across the top and right. In the background, a cemetery is visible with several stone grave markers of various shapes and sizes. The ground is a mix of dirt and grass, with dappled sunlight filtering through the leaves. The overall scene is peaceful and natural.

Domaine  
d'Esclatesang

in the Lubéron



52 acres  
on the hillside  
comprising :  
a «*bastide*» (mansion),  
two «*mas*» (guest houses),  
a swimming pool,  
a tennis court,  
a rocky waterfall,  
a «*borie*» (typical provençal  
shelter, built out of dry stones),  
and a water spring.

The property is located in the heart of the Lubéron, mid-way between the cities of Apt and Saignon. Its quiet and peaceful surroundings afford spectacular views over Mount Ventoux, the Vaucluse mountains, the Albion plateau and the famous Saignon rock.

The entrance to the property is situated at the exact location of the "borne d'octroi", beyond which, in ancient times, merchants were required to pay taxes on their goods destined to the city of Apt.

One accesses the property through a 500 metre private path, across a leafy park that comprises magnificent hundred year old-trees. The estate includes about 10 hectares of forests and guarrigues, and as many hectares of fields of lavender and cherry trees (which could be converted into vineyards).

As one advances huphill, one successively discovers three separate houses: a bastide and two guest houses (the latter known as the "Mas Chauvin" and "Mas Bel-Air", respectively).

The estate also includes a sizeable swimming pool, a tennis court, a "borie" (that is, a typical provençal shelter, built out of dry stones), a large garage, as well as other outbuildings.

A prized water spring feeds a rocky waterfall designed in 1880 by Louis Faucon, who, among other art works, built the "Fontaine de l'Elephant" in Apt. The waterfall also waters various ornamental gardens.



### *Esclatesang*

The property takes its name from a battle in the year 123 BC. between the Roman army and the Vulgientes tribe which then populated the area.

The Romans emerged victorious from a struggle that was so harsh and bloody that they referred to it as «*Sanguis escaturiens*» translated into the local language as «*Esclate-Sang*».











**T**he main house is a rare provençal bastide, built in the 18th century, and which has remained in the same family for some 250 years.

It comprises 440 m<sup>2</sup> of living space, including a large dining room, 13 bedrooms, three bathrooms and four shower rooms. If one adds additional rooms, such as the lounge-playroom, the total floor area increases to 687 m<sup>2</sup>.

Adjacent to the house is a shaded terrace that includes hundred year old-plane trees. It offers spectacular views over the Vaucluse mountains.

## The Bastide

Alt. 334 m











## Le mas «Chauvin»

The first guest house Alt. 344 m

A stone's throw from the swimming pool is the first guest house, known as the "Mas Chauvin". It is built out of dry stones, on the site of an old sheep pen.

It includes a living area of 62 m<sup>2</sup>, with a living room, two bedrooms, a shower room and a kitchen.







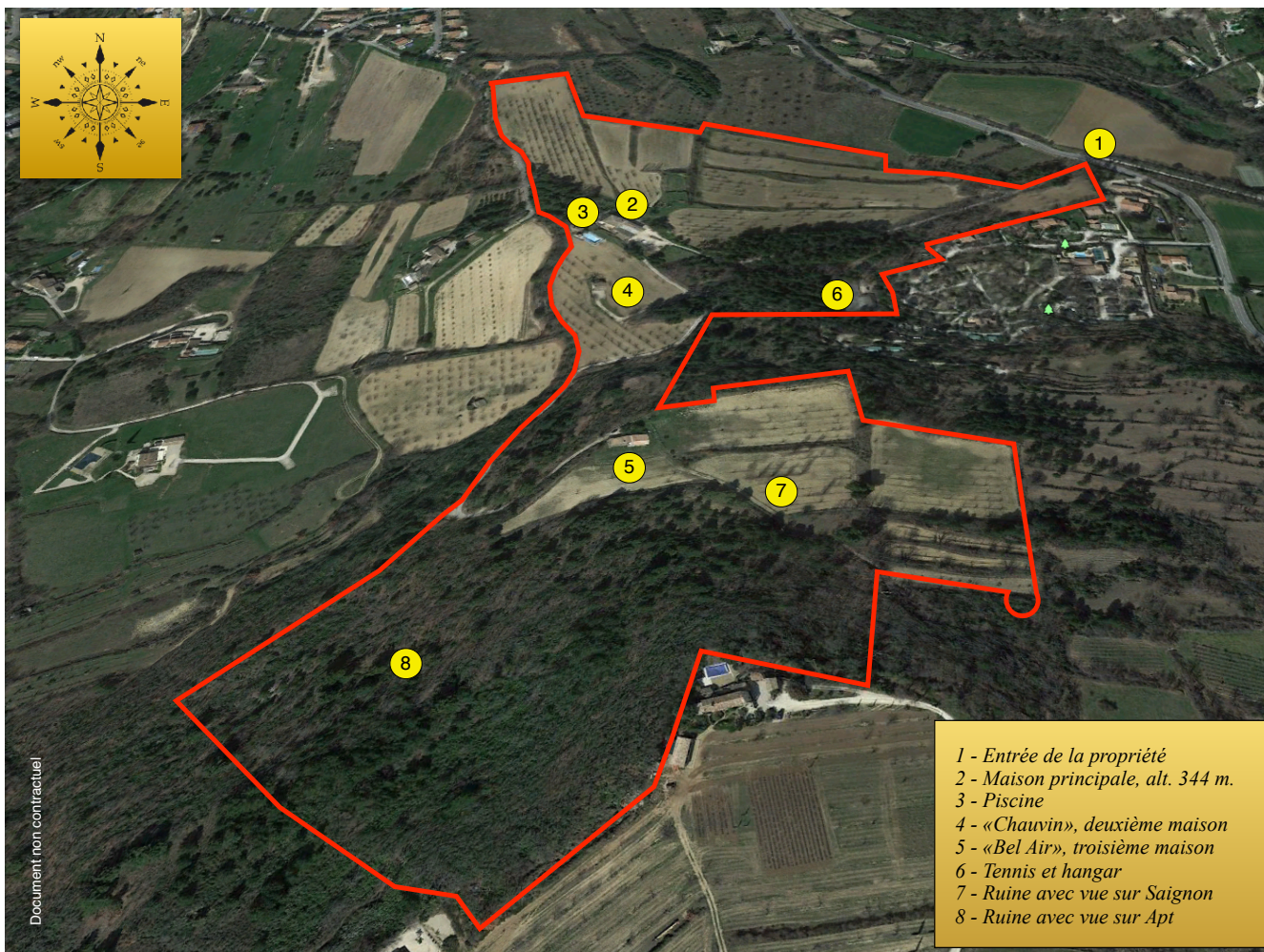
## The «Mas Bel-Air»

Second guest house    Alt. 386 m

**B**uilt out of dry stones on the site of an old olive mill, the "Mas Bel-Air" guest house offers a living area of 130 m<sup>2</sup> and includes a living room, four bedrooms, a bathroom, a shower room and a kitchen







The estate is located mid-way between Saignon and Apt.

