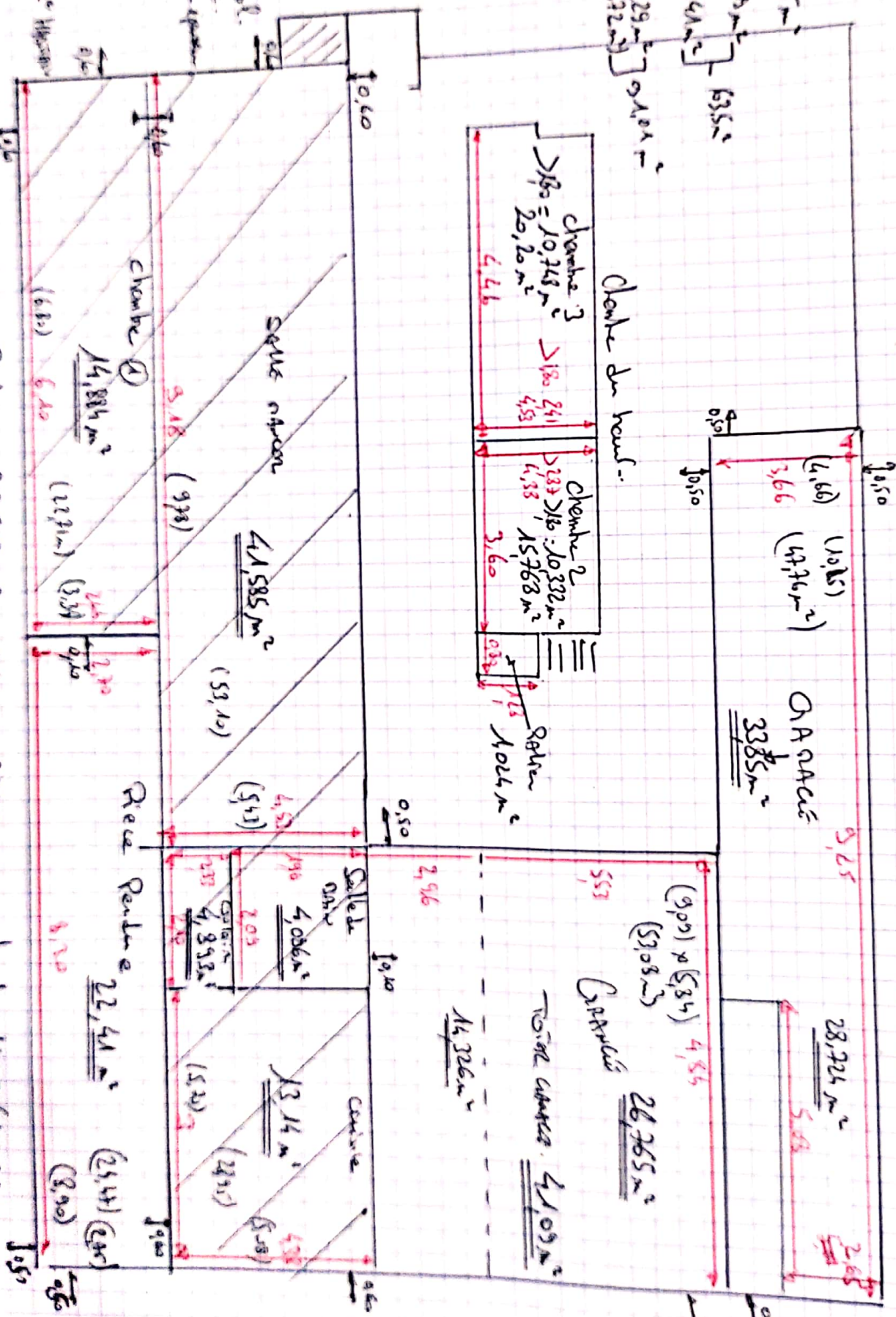


Surface  
 Garage: 3385 m<sup>2</sup>  
 Garage: 410 m<sup>2</sup>  
 Rivale: 2241 m<sup>2</sup>  
 Cuisine: 6229 m<sup>2</sup>  
 Total: 28724 m<sup>2</sup>



Surface gar. sol.  
 appartement  
 rapport: 60 m<sup>2</sup> environ  
 en m<sup>2</sup>:  
 (22,21)  
 + (33,10)  
 = (55,31)  
 / 0,18 m<sup>2</sup> Habitat  
 = 307,28 m<sup>2</sup>

Surface habitable = R de C = 78,593 m<sup>2</sup>  
 Surface D/P = 22,104 m<sup>2</sup>  
 Total = 100,697 m<sup>2</sup>

R de C = 78,593 m<sup>2</sup>  
 Surface = 22,104 m<sup>2</sup>  
 Total = 100,697 m<sup>2</sup>

+ chambre Haut Appartement:  
 28,724 m<sup>2</sup>  
 Total: 144,341 m<sup>2</sup>

