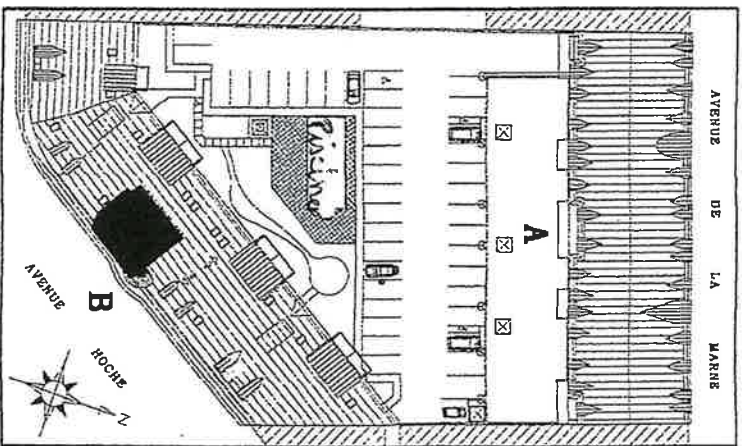
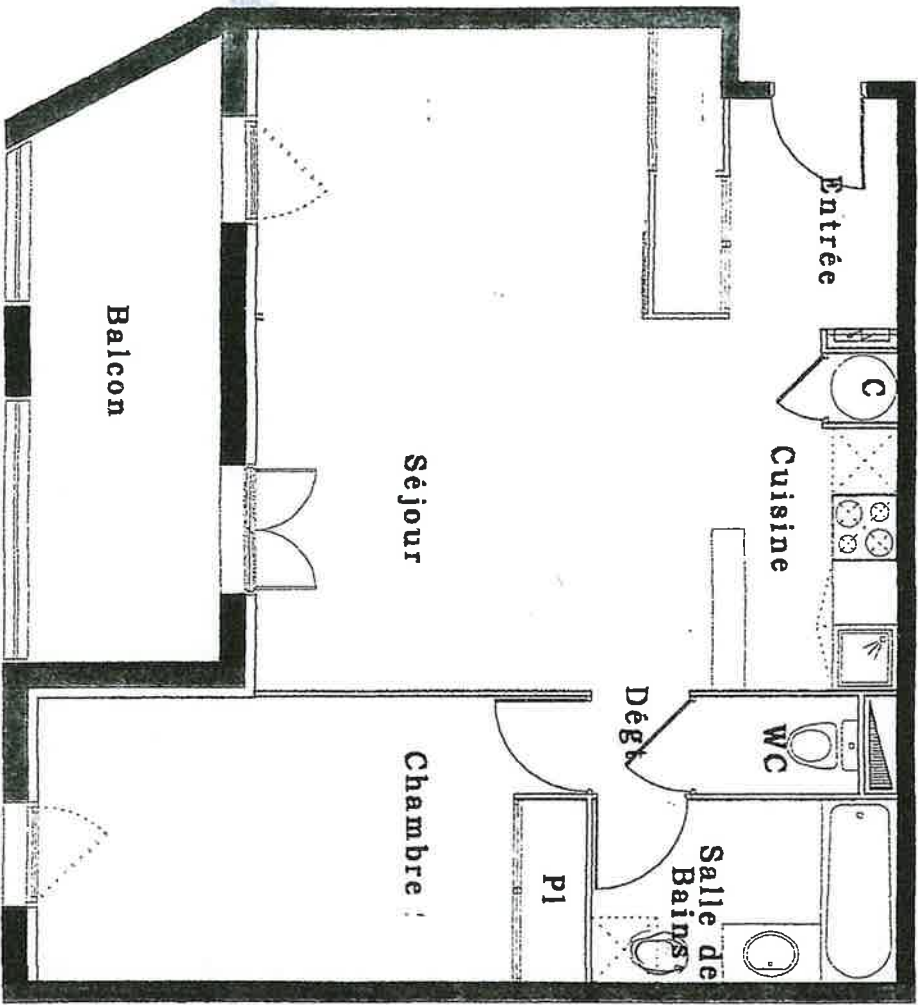
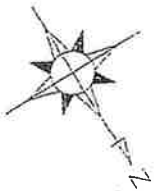


RESIDENCE LAOUDON DE D'ORLÈANS



3 PIECES N° B110
BÂTIMENT B
1er ETAGE

Transféré en T2

SURFACES HABITABLES (m ²)	
ENTRÉE+PL.+DEGÂT	4.90
SEJOUR+CUISINE	20.20
CHAMBRE 1+PL	10.45
CHAMBRE 2+PL	13.40
WC	1.35
SALLE DE BAINS	4.70
TOTAL SURFACE HABITABLE	55.00